



Naked Eye Observations

You Have 12 minutes to answer the questions of the Naked Eye Observations (Question 1 and Question 2)

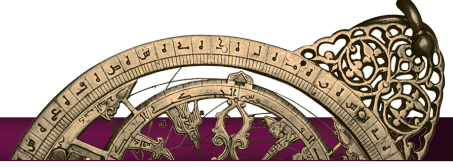
Question 1: (40 Points)

1.1: Figure 1 (frame size $\cong 100^\circ \times 70^\circ$) shows a part of the sky, for 22 October 2009 at 21:00 local time. Four bright stars in Perseus and Andromeda constellations are missing in this chart. Find these missing stars by looking at the sky. Then, draw a cross on the location of each missing bright star in these two constellations on the chart (i.e. figure 1). Use numbers in table 1 to indicate these crosses.

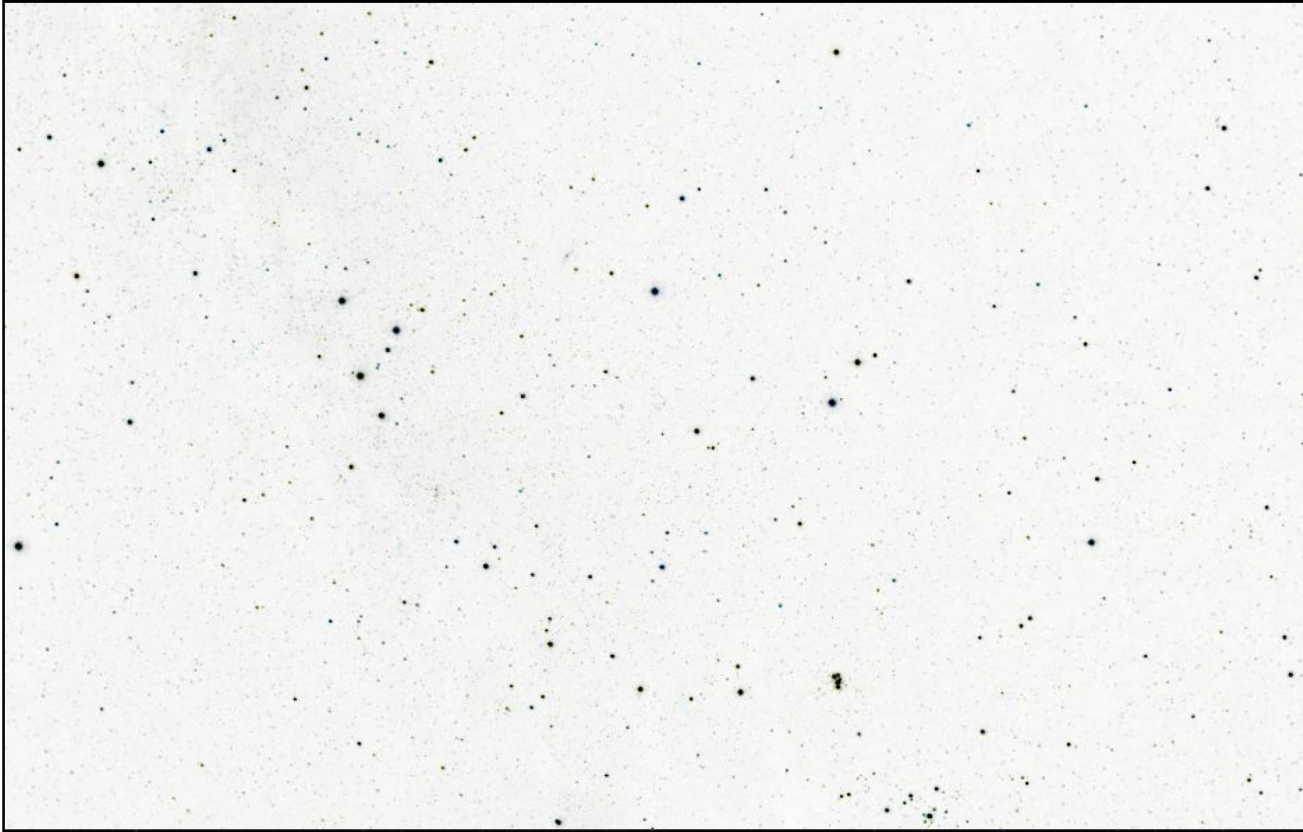


Table 1

Number	Common Name	Bayer Names
1	Mirfak	Alpha Persei
2	Alpheratz	Alpha Andromeda
3	-	Epsilon Persei
4	Menkib	Xi Persei
5	-	Gamma Persei
6	Algol	Beta Persei
7	Almach	Gamma Andromeda
8	-	Delta Andromeda
9	-	51 Andromeda
10	Mirach	Beta Andromeda
11	Atik	Zeta Persei



Question 1 - Figure 1





Question 2:

2.1: Figure 2 shows a part of the sky which contains **Cepheus constellation**, for 22 October 2009 at 22:00 local time. Five bright stars in Cepheus constellation are identified by numbers (1, 2, ... , 5) and common names. Estimate the angular distances (in units of degrees) between two pairs of stars shown in table 2 and complete this table with your answers. **(40 Points)**

Table 2

Angular Distance	
Pairs of stars	Angular Distance (degrees)
1 (Errai) and 2 (Alfirk)	
1 (Errai) and 3 (Alderamin)	

2.2: Use table 3 and figure 2, then estimate the “apparent visual magnitude” of stars 2 (Alfirak) and 3 (Alderamin) and complete table 4. **(40 Points)**

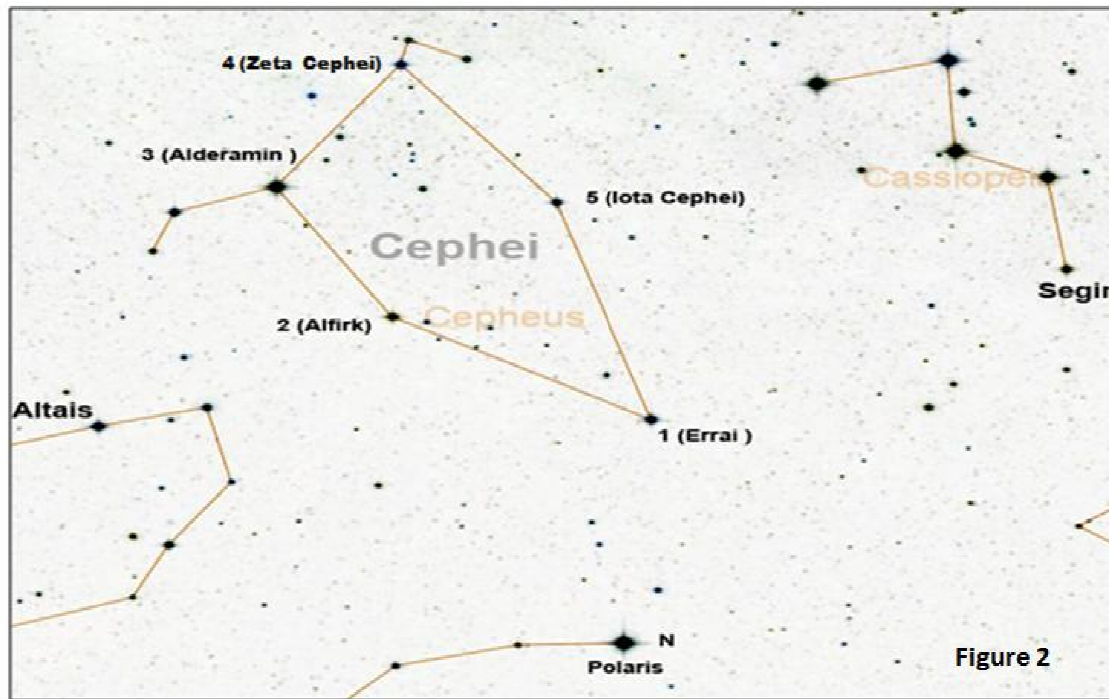
Table 3

Star Name	Apparent Visual Magnitude
Polaris	1.95
Altais	3.05
Segin	3.34
All of these stars, are marked in the figure 2	



Table 4

Magnitude Estimation		
Star Number	Star Name	Apparent Visual Magnitude
2	Alfirk	
3	Alderamin	





Telescopic Observations

Note: You have only 13 Minutes to answer all parts of this Question

Question 3

Before starting this part, please note:

The telescope is pointed by the examiner towards Caph (α Cas). Please note the readings on the grade circles before moving the telescope (to be used in 3.2).

3.1: Choose one of the 4 recommended stars listed below; write down the name of the selected star in table 5 and point the telescope to that star. Then, notify the examiner to check it. **(6 minutes; 40 Points)**

- 1- Deneb (Alpha Cygni)
- 2- Alfirk (Beta Cephei)
- 3- Algol (Beta Persei)
- 4- Capella (Alpha Aurigae)



Table 5

Name of selected star

3.2: The Telescope is pointed to Caph in Cassiopeia constellation (RA: 0h:9.7m ; Dec: 59°:12'). Using the clock beside the telescope write down the local time (with the format of HH:MM:SS) in the appropriate field in table 6. Then, by using the graded circle on the telescope mount, estimate “declination” and “hour angle” of the target measured from South, which you chose in part one of this question. Then, complete Table 6. **(7 minutes; 40 Points)**

Table 6

Name and Coordinates of the Selected Star			Local Time :
Name of Selected Star	Hour Angle (hh:mm)	Declination (°:')	